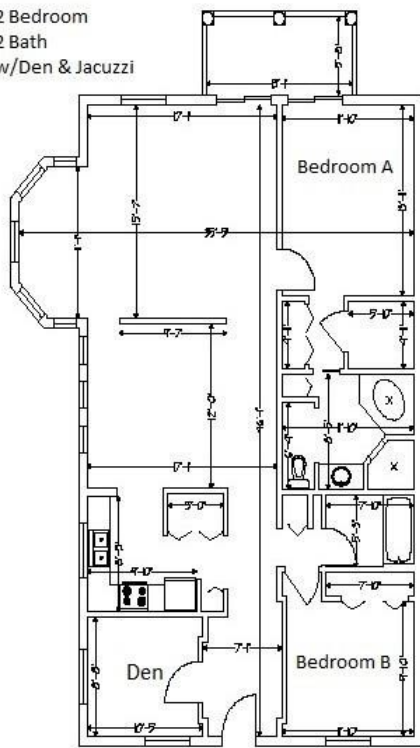


2 Bedroom
2 Bath
w/Den & Jacuzzi



1,519 sq. ft. Unit Type D

Our largest two-bedroom apartment at 1,519 square feet is a preferred choice for students looking for more space, comfort and privacy. Bedroom A features extra closet space and a Jacuzzi tub.



Benefits of On-Campus Housing

- Water, electrical allowance, phone and basic cable included
- Laundry and trash rooms in each building
- Limited to members of the AMSL community
- Competitively low rental cost
- Close proximity to classrooms and library

If a roommate is not specified on the housing application, you will be placed with another AMSL student.

AMSL Housing does not permit pets or smoking.
Review the Housing Handbook for additional information.

If you are renting the entire unit, add A & B together.
Leases are annual and billed by the semester.



On-Campus Housing Apartments

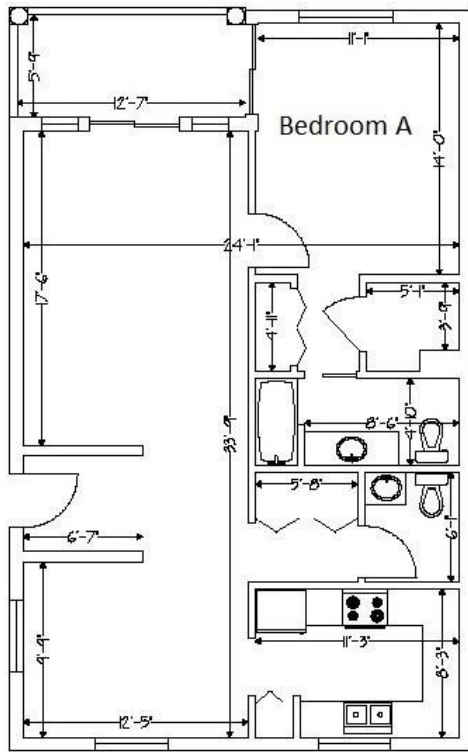


AVE MARIA SCHOOL OF LAW

1025 Commons Circle
Naples, FL 34119

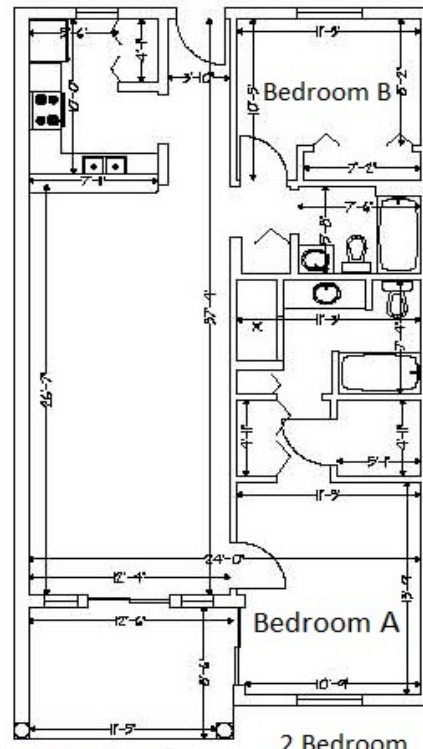
Phone: 239.687.5334

housing@avemarialaw.edu
<http://www.avemarialaw.edu>



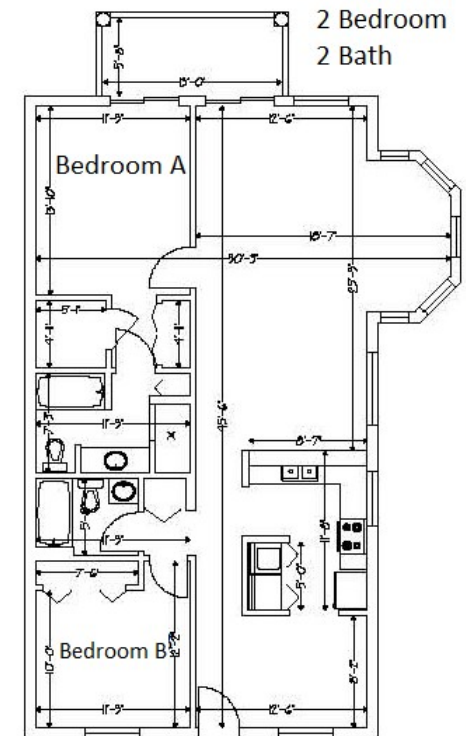
964 sq. ft.
Unit Type C
1 Bedroom
1.5 Bath

Our one-bedroom model is very spacious and accommodating with 1.5 bathrooms. Preference may be to married couples or individuals requiring accommodations. There are only **7** of these units on campus, and there is usually a waiting list, so apply early if you have a preference for this unit.



1,041 sq. ft.
Unit Type B
2 Bedroom
2 Bath

Our smallest two-bedroom apartment at 1,041 square feet is a good choice for the budget-minded student as the least expensive housing option. The units are conveniently located near the elevators and trash rooms.



1,274 sq. ft.
Unit Type A
2 Bedroom
2 Bath

Our intermediate two-bedroom apartment offers a nice middle ground in size and price. These units are located near the stairs, and have very nice natural light coming in through the many windows. The floor plan resembles that of the larger two-bedroom apartment, but with a smaller footprint.