

Our largest two-bedroom apartment at 1,519 square feet is a preferred choice for students looking for more space, comfort and privacy. Bedroom A features extra closet space and a Jacuzzi tub, while Bedroom B comes with a den.

Fall/Spring Rent:

- Bedroom A: **\$4,380**
- Bedroom B: **\$3,585**

Summer Rent:

- Bedroom A: **\$1,752**
- Bedroom B: **\$1,434**

Comparable Monthly Rate:**

- Bedroom A: **\$876**
- Bedroom B: **\$717**

**Leases are annual, billed by the semester.



Benefits of On-Campus Housing

- Close proximity to classrooms and library
- Water, electrical allowance, phone and basic cable included
- Laundry and trash rooms in each building
- Limited to members of the AMSL community
- Competitively low rental cost

If a roommate is not specified on the housing application, you will be placed in an apartment with another AMSL student.

No pets are allowed in AMSL housing.

For information about Villas, please refer to the Ave Maria School of Law Villa brochure.



AVE MARIA SCHOOL OF LAW

1025 Commons Circle

Naples, FL 34119

Phone: 238.687.5300

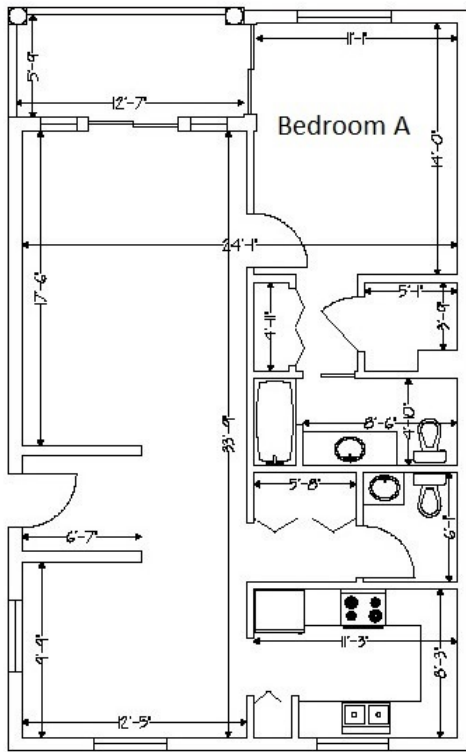
housing@avemaria.edu

<http://www.avemarialaw.edu>



On-Campus Housing Apartments

2017-2018



964 sq. ft.
Unit Type C
1 Bedroom
1.5 Bath

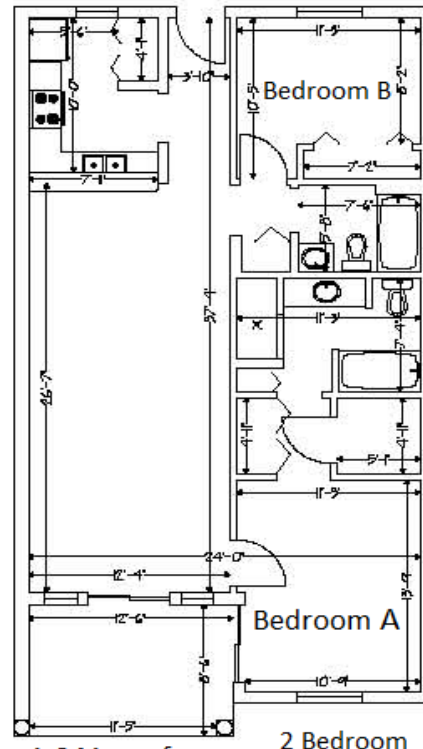
Our one-bedroom model is very spacious and accommodating with 1.5 bathrooms. Preference may be to married couples or individuals requiring accommodations. There are only **7** of these units on campus, and there is usually a waiting list, so apply early if you have a preference for this unit.

Fall/Spring Rent: **\$5,160**

Summer Rent: **\$2,064**

Comparable Monthly Rate:****\$1,032**

**Leases are annual, billed by the semester.



1,041 sq. ft.
Unit Type B
2 Bedroom
2 Bath

Our smallest two-bedroom apartment at 1,041 square feet is a good choice for the budget-minded student as the least expensive housing option. The units are conveniently located near the elevators and trash rooms.

Fall/Spring Rent:

- Bedroom A: **\$3,610**
- Bedroom B: **\$2,950**

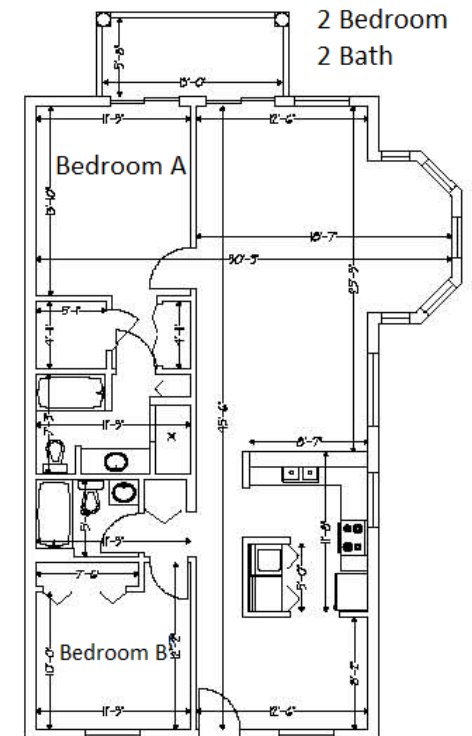
Summer Rent:

- Bedroom A: **\$1,444**
- Bedroom B: **\$1,180**

Comparable Monthly Rate:**

- Bedroom A: **\$722**
- Bedroom B: **\$590**

**Leases are annual, billed by the semester.



1,274 sq. ft.
Unit Type A
2 Bedroom
2 Bath

Our intermediate two-bedroom apartment offers a nice middle ground in size and price. These units are located near the stairs, and have very nice natural light coming in through the many windows. The floor plan resembles that of the larger two-bedroom apartment, but with a smaller footprint.

Fall/Spring Rent:

- Bedroom A: **\$3,845**
- Bedroom B: **\$3,145**

Summer Rent:

- Bedroom A: **\$1,538**
- Bedroom B: **\$1,258**

Comparable Monthly Rate:**

- Bedroom A: **\$769**
- Bedroom B: **\$629**

**Leases are annual, billed by the semester.